



57 Whirlow Court Road, Sheffield S11 9NS £2,100 Per Calendar Month

Situated in the heart of the highly desirable residential suburb of Whirlow is this immaculately presented 4 bedroom semi detached house.

Ideal for the professional couple/family with its locality to the city centre, yet on the fringe of Derbyshire and the Peaks, internally the property comprises; entrance hallway with cloak storage and downstairs WC, spacious dining room with rear door to garden and patio, front bay windowed living room, kitchen and utility room. First floor; master double bedroom with en suite, a further two double bedrooms, single fourth, bathroom with full suite and separate shower cubicle. Outside: driveway, parking for two vehicles, double garage, patio to rear, lawn garden to rear and side.

PART FURNISHED Restrictions: No smokers or pets. Energy Efficiency Rating E. Council Tax Band E.

57 WHIRLOW COURT ROAD

APPROXIMATE GROSS INTERNAL AREA
169.8 SQ M / 1828 SQ FT

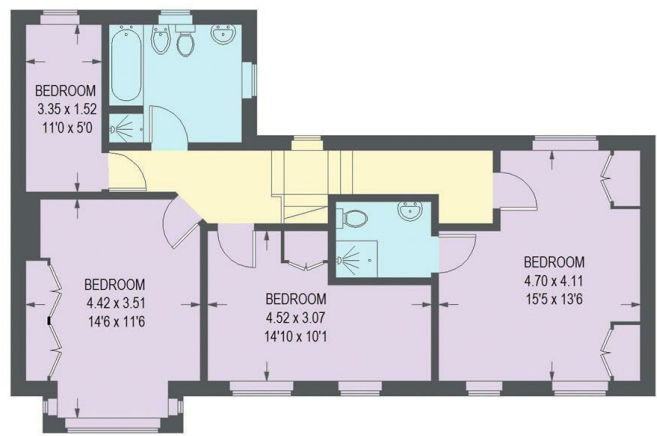
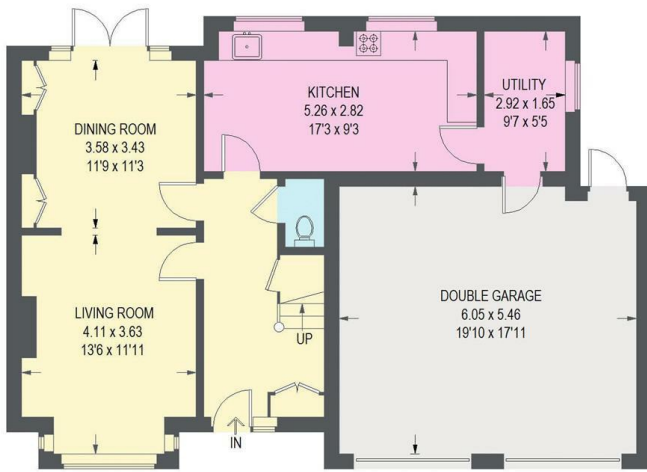
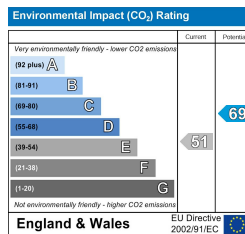
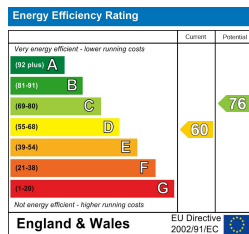


Illustration for identification purposes only, measurements are approximate, not to scale.



Banner Cross
Hathersage
Bakewell
Matlock
www.saxtonmee.co.uk

949-951 Ecclesall Road, Sheffield S11 8TN
3 Bank View, Main Road, Hathersage S32 1BB
Matlock Street, Bakewell DE45 1EE
27 Causeway Lane, Matlock, DE4 3AR

T: 0114 268 3241
T: 01433 650009
T: 01629 815307
T: 01629 828250

E: bannercross@saxtonmee.co.uk
E: hathersage@saxtonmee.co.uk
E: bakewell@saxtonmee.co.uk
E: matlock@saxtonmee.co.uk